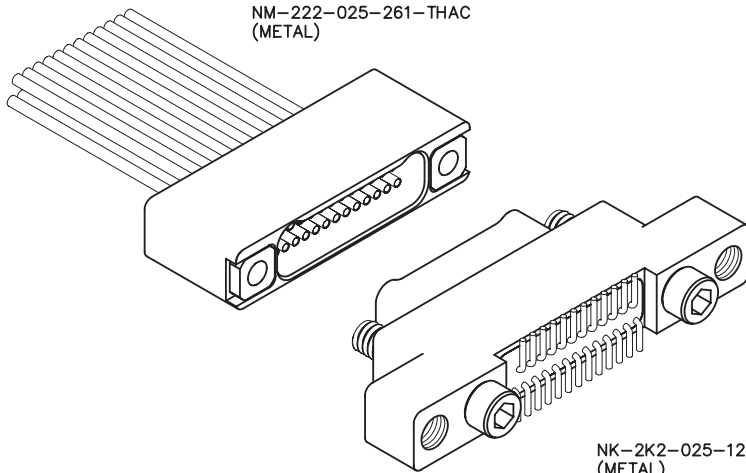


2 · ROW Cable to Vertical SMT w/ Mounting Ears

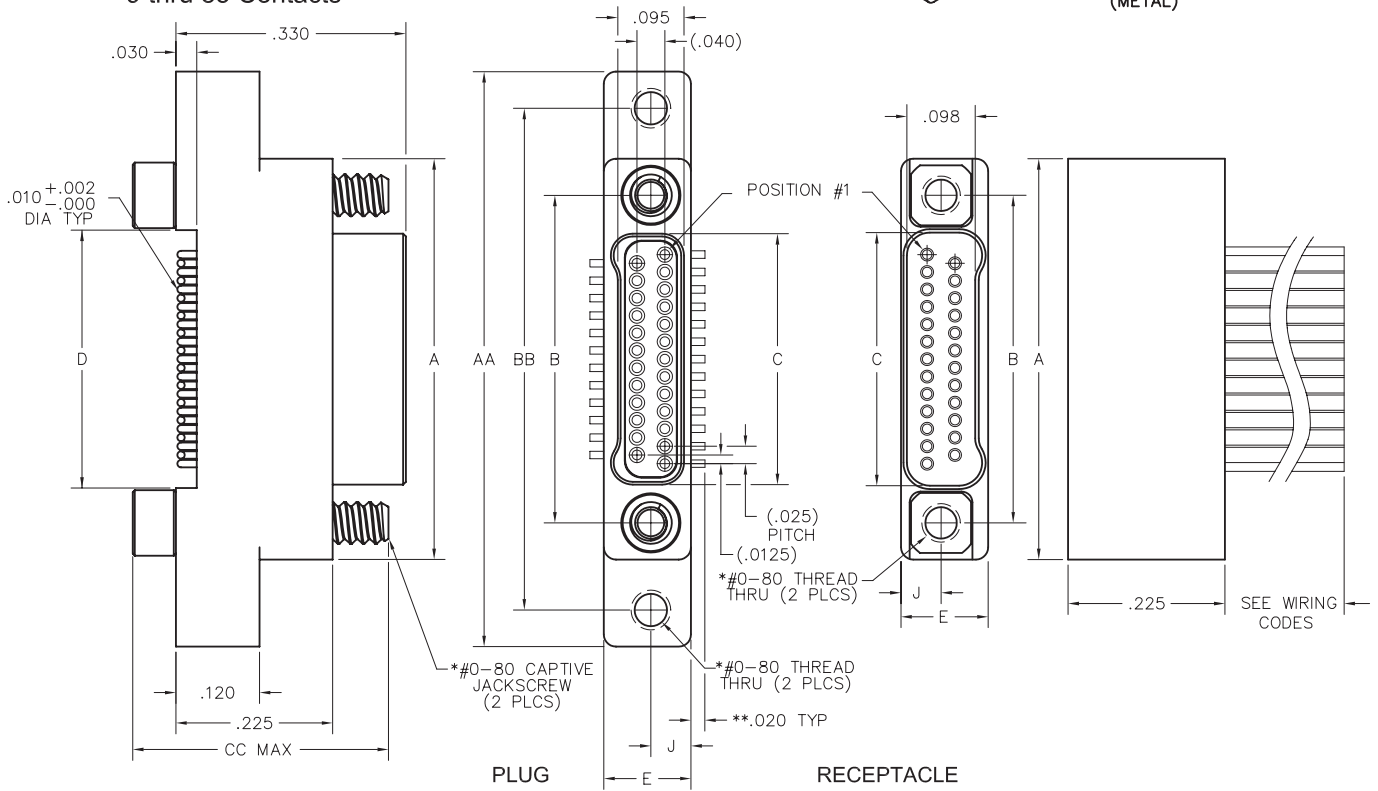
.025"

NM, NK

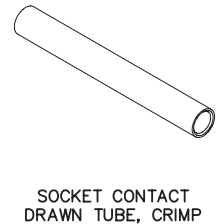
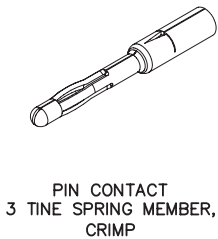
9 thru 85 Contacts



NK-2K2-025-125-JC00
(METAL)



SIZE	DIMENSIONS										HARDWARE*				
	A	B	C		D	E	J	AA	BB	CC					
			PLUG	RCPT											
9	.375	.270	.160	.163	.170	.125	.0575	.625	.520	.385	#0-80 THREAD				
15	.450	.345	.235	.238	.245			.700	.595						
21	.525	.420	.310	.313	.320			.775	.670						
25	.575	.470	.360	.363	.370			.825	.720						
31	.650	.545	.435	.438	.445			.900	.795						
37	.725	.620	.510	.513	.520			.975	.870						
51	.900	.795	.685	.688	.695			1.150	1.045						
65	1.075	.970	.860	.863	.870			1.325	1.220						
69	1.125	1.020	.910	.913	.920			1.375	1.270						
85	1.377	1.246	1.110	1.113	1.120			.150	.0700			1.679	1.546	.405	#2-56 THREAD



* = #2-56 UNC THREAD ON 85 POSITION CONNECTORS
** = DIMENSION CHANGES TO .040" FOR "010" OPTION.
SEE PAGE N-56.

— CLICK HERE —

REQUEST QUOTE

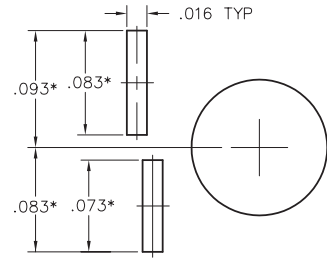
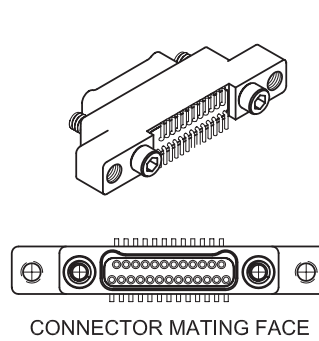
www.geminelec.com

PAGE 1 OF 5 PAGES

(800) 882-6414 | sales@geminelec.com

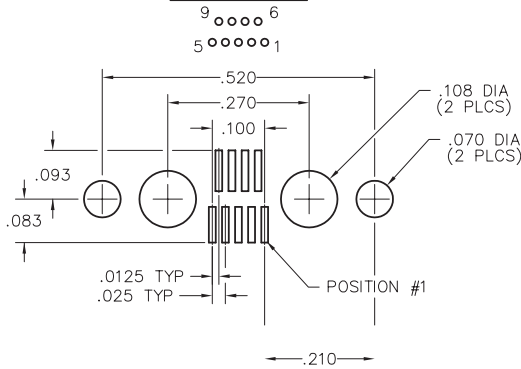
Recommended PC Board Layout

Vertical SMT Plug w/ Mounting Ears
.020 & .040 Lead Envelopes
FOR REFERENCE ONLY

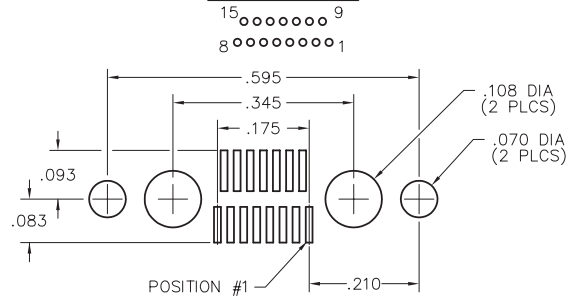


FOOTPRINT / PAD CONFIGURATION
* = For .040" lead envelope, add .020" to noted dimensions

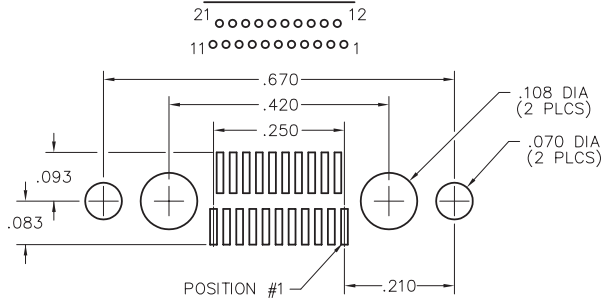
9 POSITION



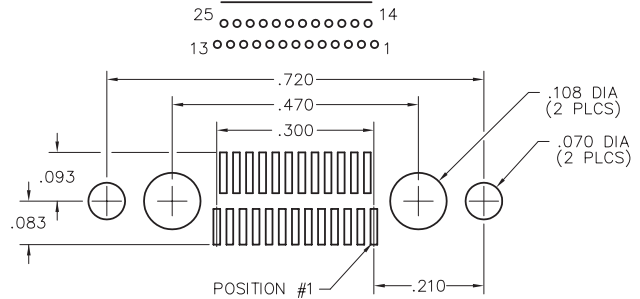
15 POSITION



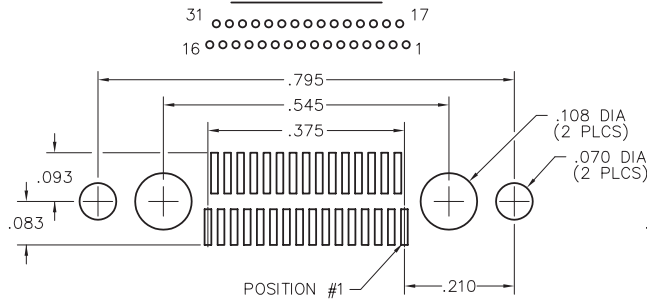
21 POSITION



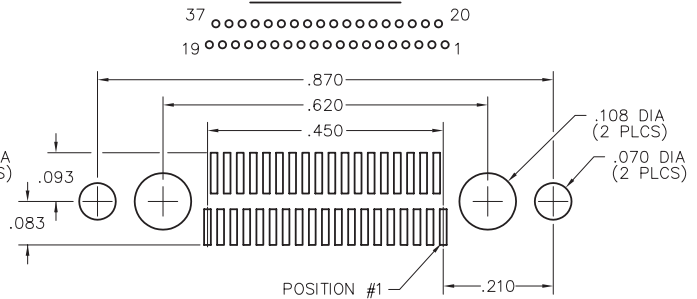
25 POSITION



31 POSITION



37 POSITION



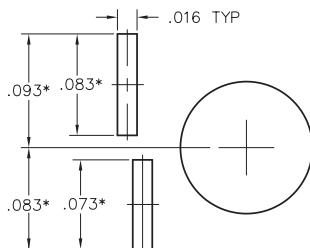
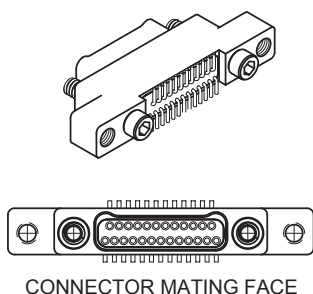
— CLICK HERE —

REQUEST QUOTE

www.geminelec.com

PAGE 2 OF 5 PAGES

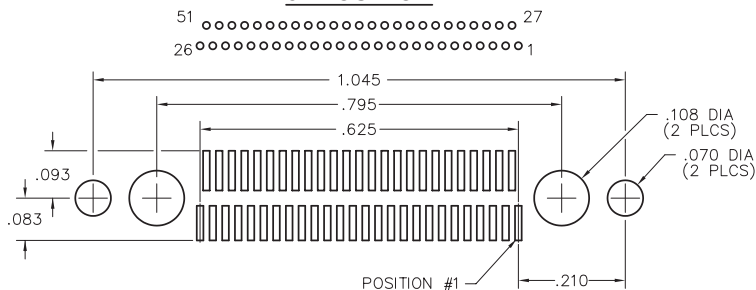
(800) 882-6414 | sales@geminelec.com



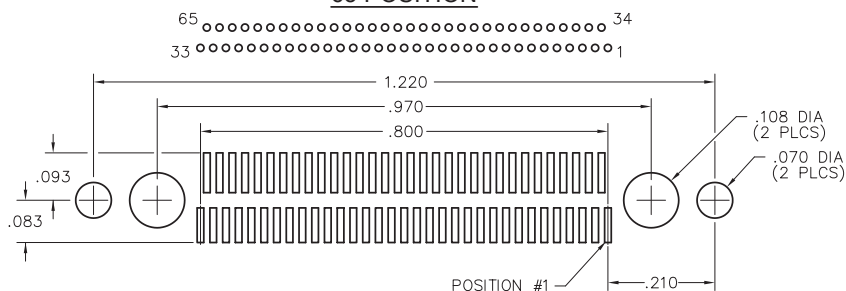
Recommended PC Board Layout

Vertical SMT Plug w/ Mounting Ears
.020 & .040 Lead Envelopes
FOR REFERENCE ONLY

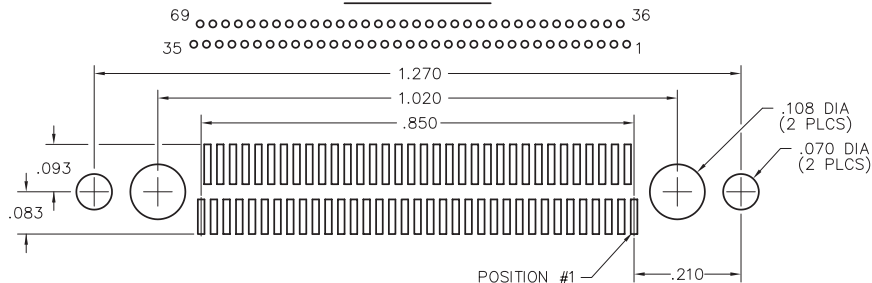
51 POSITION



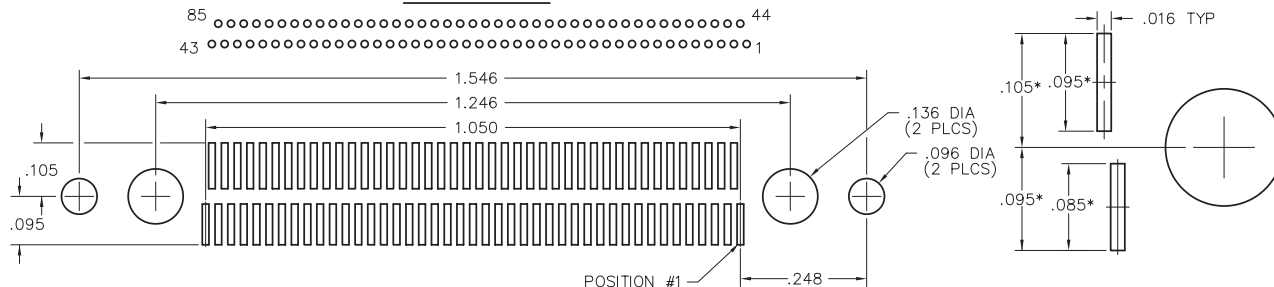
65 POSITION



69 POSITION



85 POSITION



— CLICK HERE —

REQUEST QUOTE

www.geminelec.com

PAGE 3 OF 5 PAGES

(800) 882-6414 | sales@geminelec.com

PLUG: NK-2K2-025-125-JC00
RECEPTACLE: NM-222-025-261-THAC
XX-XXX-XXX-XXX-XXXX-XXX

PLUG	RECEPTACLE
SERIES	

NK .025" Metal PC Board Mounted Connector	NM .025" Metal I/O Connector
---	------------------------------

BODY	
-------------	--

2 2-Row	2 2-Row
BODY STYLE: K Plug, vertical SMT w/ mounting ears	BODY STYLE: 2 Receptacle, straight
BODY MATERIAL: 2 Liquid Crystal Polymer w/ electroless nickel shell	BODY MATERIAL: 2 Liquid Crystal Polymer w/ electroless nickel shell
3 Liquid Crystal Polymer w/ electrodeposited cadmium shell <input checked="" type="checkbox"/>	3 Liquid Crystal Polymer w/ electrodeposited cadmium shell <input checked="" type="checkbox"/>

SIZE	
-------------	--

XXX Number of contacts (009, 015, 021, 025, 031, 037, 051, 065, 069 or 085)	XXX Number of contacts (009, 015, 021, 025, 031, 037, 051, 065, 069 or 085)
---	---

CONTACTS	
-----------------	--

TYPE CONTACTS/TERMINATIONS: 12 Pin, SMT (.020 lead envelope)	TYPE CONTACTS/TERMINATIONS: 26 Socket, straight, crimped wire
PLATING OPTIONS: 5 50 u" Au contacts; Sn/Pb alloy terminations <input checked="" type="checkbox"/> 8 50 u" Au contacts; Tin plated terminations	PLATING OPTIONS: 1 50 u" Au contacts

HARDWARE	
-----------------	--

STYLE OF HARDWARE: 00 None JC Turning jackscrews, captivated #0-80 UNF*	STYLE OF HARDWARE: 00 None TH Threaded hole, #0-80 UNF*
WIRING OPTIONS: 00 None	WIRING OPTIONS: XX See wiring codes, Page NA-2

OPTIONS	
----------------	--

010 .040 lead envelope	
------------------------	--

* = #2-56 UNC thread on 85 position connectors
 .050 hex key (#0-80 thread)
 1/16" hex key (#2-56 thread)
 Recommended torque value 1.0 inch-lbs. max. (#0-80 thread)
 Recommended torque value 2.0 inch-lbs. max. (#2-56 thread)
 Ball end hex wrench not recommended
 Hex wrench key/bit conforming to the requirements of ASME / ANSI-B-18.3 is recommended.
 .050" hex L-key long arm wrench - order AirBorn p/n CDG14148.
 1/16" hex L-key long arm wrench - order AirBorn p/n CDG14160.

= Option not RoHS compliant

