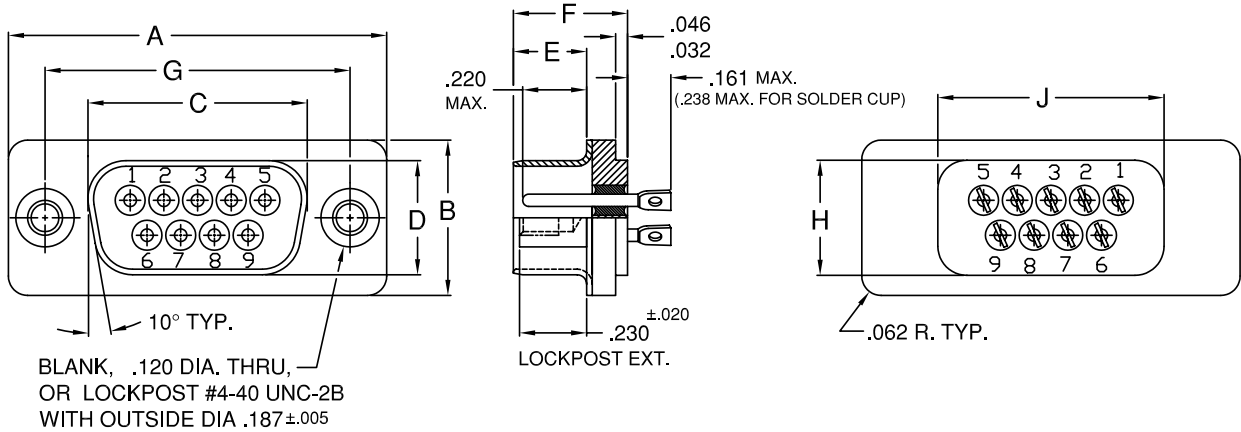
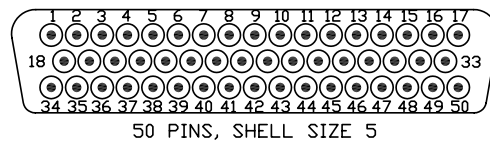
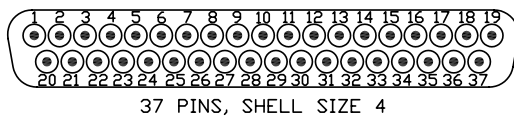
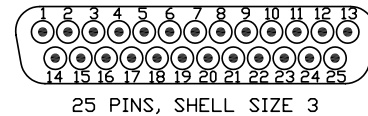
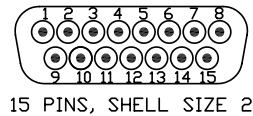
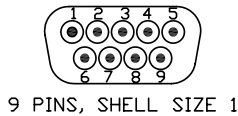


MINIATURE HERMETIC ELECTRONIC CONNECTORS—DRH SERIES

MIL-DTL-24308 TYPE D-SUB, COMMERCIAL EQUAL
HERMETIC GLASS-TO-METAL SEALED
(VACUUM / PRESSURE FEED THRU)



PART NO.	A	B	C	D	E	F	G	H	J
DRH1-9P-*	±.015	±.010	±.010	±.010	±.010	±.020	±.005	±.010	±.010
DRH2-15P-*	1.213	.498	.703	.366	.235	.367	.984	.369	.725
DRH3-25P-*	1.541	.498	1.029	.366	.235	.367	1.312	.369	.932
DRH4-37P-*	2.088	.498	1.571	.366	.230	.362	1.852	.369	1.479
DRH5-50P-*	2.729	.498	2.219	.366	.230	.362	2.500	.369	2.125
DRH5-50P-*	2.635	.610	2.115	.477	.230	.362	2.406	.500	2.000



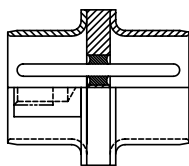
ENGAGING FACE PIN INSERTS

*ADD SUFFIX NUMBER FOR MODIFICATION (THRU HOLES, LOCKPOSTS, PLATING, PIN TYPE) - CONSULT FACTORY.
MATERIAL: STANDARD IS CRS SHELL AND 52 NICKEL ALLOY PINS.
STANDARD PIN IS EYELET TYPE. OTHER PIN TYPES ALSO AVAILABLE (SOLDER CUP, STRAIGHT) - CONSULT FACTORY.
STANDARD FINISH IS TIN PLATED SHELL AND PINS.
OTHER FINISHES ALSO AVAILABLE (GOLD, NICKEL, etc.) - CONSULT FACTORY.
SPECIALS CAN BE SUPPLIED TO MEET CUSTOMER SPECIFICATIONS - CONSULT FACTORY.
OUR CONNECTORS MATE WITH ANY PLUG WITH SOCKET CONTACTS WHICH MEET THE DIMENSIONAL REQUIREMENTS OF MIL-DTL-24308

GENERAL SPECIFICATIONS

AIR LEAKAGE: $1.04 \times 10^{-5} \text{ CM}^3/\text{SEC}$ AT 15psi
INSULATION RESISTANCE: 5,000 megohms AT 500VDC
OPERATING TEMPERATURE: -67°F TO +257°F (-55°C TO +125°C)
CURRENT RATING: 5 AMPS

**ALSO AVAILABLE
THRU BULKHEAD
DRTBH SERIES
STANDARD
LOCKPOSTS
THRU HOLES
CONSULT FACTORY**



PART NUMBERING SYSTEM

DRH 1 - 9 P - ***



--- CLICK HERE ---

REQUEST QUOTE

www.geminelec.com

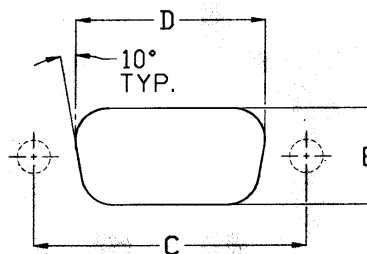
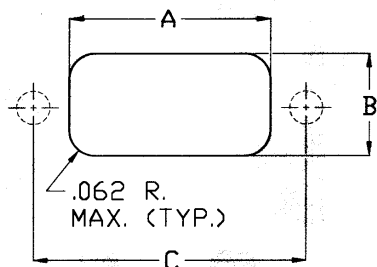
PAGE 1 OF 4 PAGES

(800) 882-6414 | sales@geminelec.com

PANEL CUT OUT FOR D-SUB SERIES

PART NO.	A MIN.	B MIN.	C ±.005	D MIN.	E MIN.
DRH1-9P-*	.735	.379	.984	.794	.457
DRH2-15P-*	.942	.379	1.312	1.120	.457
DRH3-25P-*	1.489	.379	1.852	1.682	.477
DRH4-37P-*	2.135	.379	2.500	2.330	.477
DRH5-50P-*	2.010	.510	2.406	2.226	.583

PART NO.	C ±.005	D MIN.	E MIN.
DRTBH1-9P-*	.984	.794	.457
DRTBH2-15P-*	1.312	1.120	.457
DRTBH3-25P-*	1.852	1.682	.477
DRTBH4-37P-*	2.500	2.330	.477
DRTBH5-50P-*	2.406	2.226	.583



--- CLICK HERE ---

REQUEST QUOTE

www.geminelec.com

PAGE 2 OF 4 PAGES

(800) 882-6414 | sales@geminelec.com