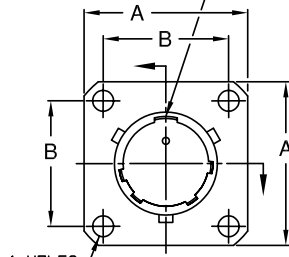


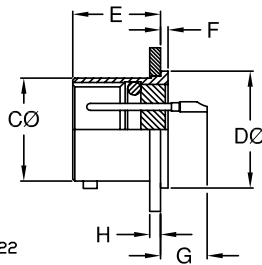
# MINIATURE HERMETIC ELECTRONIC CONNECTORS-DT SERIES

MIL-DTL-26482 TYPE, COMMERCIAL EQUAL  
HERMETIC GLASS-TO-METAL SEALED  
(VACUUM / PRESSURE FEED THRU)

MAIN POLARIZING KEYWAY



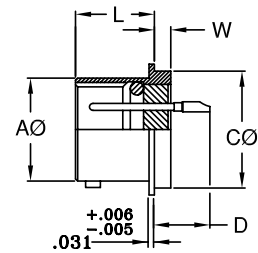
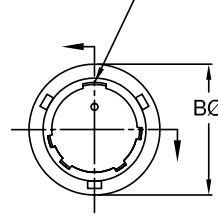
4 HOLES  
.120±.005 - SHELL SIZES 8 THRU 22  
.147±.005 - SHELL SIZE 24



PART NO.	A ±.016	B TYP.	CØ +.001 -.005	DØ +.001 -.005	E +.025 -.015	F ±.016	G MAX.	H ±.016
DT02H-8-#PN	.812	.594	.473	.562	.494	.047	.344	.062
DT02H-10-#PN	.938	.719	.590	.672	.494	.047	.344	.062
DT02H-12-#PN	1.031	.812	.750	.781	.494	.047	.344	.062
DT02H-14-#PN	1.125	.906	.875	.906	.494	.047	.344	.062
DT02H-16-#PN	1.219	.969	1.000	1.031	.494	.047	.344	.062
DT02H-18-#PN	1.312	1.062	1.125	1.156	.494	.047	.344	.062
DT02H-20-#PN	1.438	1.156	1.250	1.220	.556	.047	.344	.094
DT02H-22-#PN	1.562	1.250	1.375	1.340	.556	.079	.377	.094
DT02H-24-#PN	1.688	1.375	1.500	1.470	.588	.079	.377	.094

**DT02H - FLANGE MOUNT CONNECTORS  
(MS3112 CLASS H TYPE)**

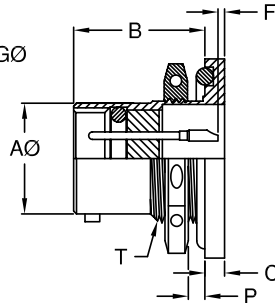
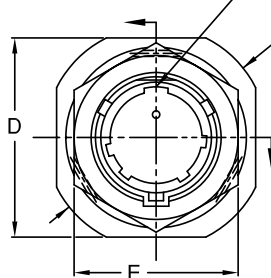
MAIN POLARIZING KEYWAY



PART NO.	AØ +.001 -.005	BØ MAX.	CØ +.001 -.005	D MAX.	L +.025 -.016	W +.011 -.010
DT1H-8-#PN	.473	.636	.562	.386	.447	.094
DT1H-10-#PN	.590	.761	.672	.386	.447	.094
DT1H-12-#PN	.750	.855	.781	.386	.447	.094
DT1H-14-#PN	.875	.980	.906	.386	.447	.094
DT1H-16-#PN	1.000	1.105	1.031	.386	.447	.094
DT1H-18-#PN	1.125	1.229	1.156	.386	.447	.094
DT1H-20-#PN	1.250	1.323	1.250	.386	.509	.094
DT1H-22-#PN	1.375	1.449	1.375	.418	.509	.125
DT1H-24-#PN	1.500	1.574	1.500	.418	.542	.125

**DT1H - SOLDER MOUNT CONNECTORS  
(MS3113 CLASS H TYPE)**

MAIN POLARIZING KEYWAY



PART NO.	AØ +.001 -.005	B +.031 -.000	C ±.020	D MAX.	E HEX ±.017	F PIN ±.030	GØ +.000 -.032	PANEL THK. MIN.	T THREAD † UNEF-2A	
DT07H-8-#PN	.473	.691	.117	.954	.750	.025	1.078	.062	.125	.5625-24
DT07H-10-#PN	.590	.691	.117	1.078	.875	.025	1.203	.062	.125	.6875-24
DT07H-12-#PN	.750	.691	.117	1.266	1.062	.025	1.391	.062	.125	.875-20
DT07H-14-#PN	.875	.691	.117	1.391	1.188	.025	1.516	.062	.125	1.000-20
DT07H-16-#PN	1.000	.691	.117	1.516	1.312	.025	1.641	.062	.125	1.125-18
DT07H-18-#PN	1.125	.691	.117	1.641	1.438	.025	1.766	.062	.125	1.250-18
DT07H-20-#PN	1.250	.879	.148	1.828	1.562	.190	1.954	.062	.250	1.375-18
DT07H-22-#PN	1.375	.879	.148	1.954	1.688	.190	2.078	.062	.250	1.500-18
DT07H-24-#PN	1.500	.912	.148	2.078	1.812	.220	2.203	.062	.250	1.625-18

**DT07H - JAM NUT MOUNT CONNECTORS (MS3114 CLASS H TYPE)**

\* ADD DESIRED INSERT ARRANGEMENT.

▼ INSERT ARRANGEMENT IS SHOWN IN NORMAL POSITION.

† AFTER PLATING, SUBJECT TO ACCEPTANCE USING A BASIC CLASS 3A GO GAGE.

OTHER PIN PATTERNS AND INSERT POSITIONS MAY BE AVAILABLE -CONSULT FACTORY.

MATERIAL: STANDARD IS CRS SHELL, 52 NICKEL ALLOY PINS AND SILICONE O-RING ONLY.

STANDARD PIN IS SOLDER CUP TYPE. OTHER PIN TYPES ALSO AVAILABLE

(EYELET, STRAIGHT, THERMOCOUPLE) - CONSULT FACTORY.

STANDARD FINISH IS TIN PLATED SHELL AND PINS.

OTHER FINISHES ALSO AVAILABLE (GOLD, NICKEL, OLIVE DRAB, etc.) - CONSULT FACTORY.

SPECIALS CAN BE SUPPLIED TO MEET CUSTOMER SPECIFICATIONS - CONSULT FACTORY.

OUR CONNECTORS MATE WITH ANY PLUG WITH SOCKET CONTACTS WHICH MEET

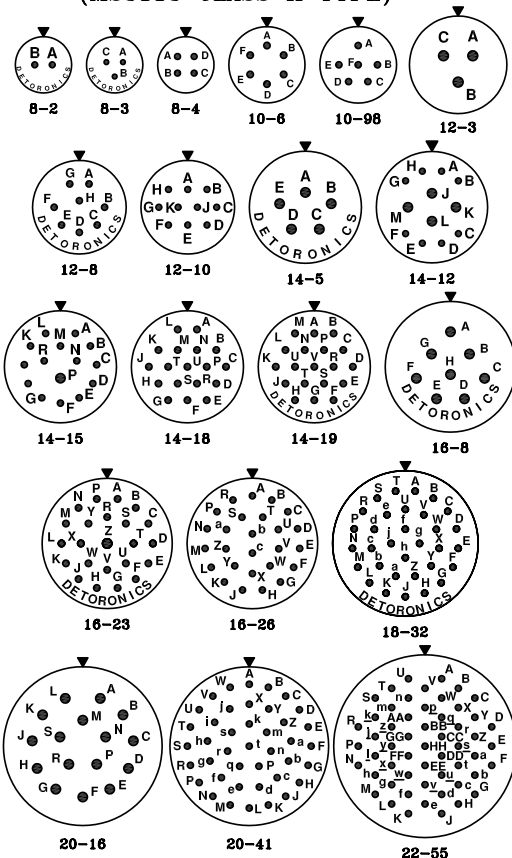
THE DIMENSIONAL REQUIREMENTS OF MIL-DTL-26482 AND MS3116.

**GENERAL SPECIFICATIONS**

AIR LEAKAGE: 1x10<sup>-6</sup> CM<sup>3</sup>/SEC AT 15psi

INSULATION RESISTANCE: 5,000 megohms AT 500VDC

OPERATING TEMPERATURE: -67°F TO +257°F (-55°C TO +125°C)



**ENGAGING FACE PIN INSERTS**

--- CLICK HERE ---

**REQUEST QUOTE**

www.geminelec.com

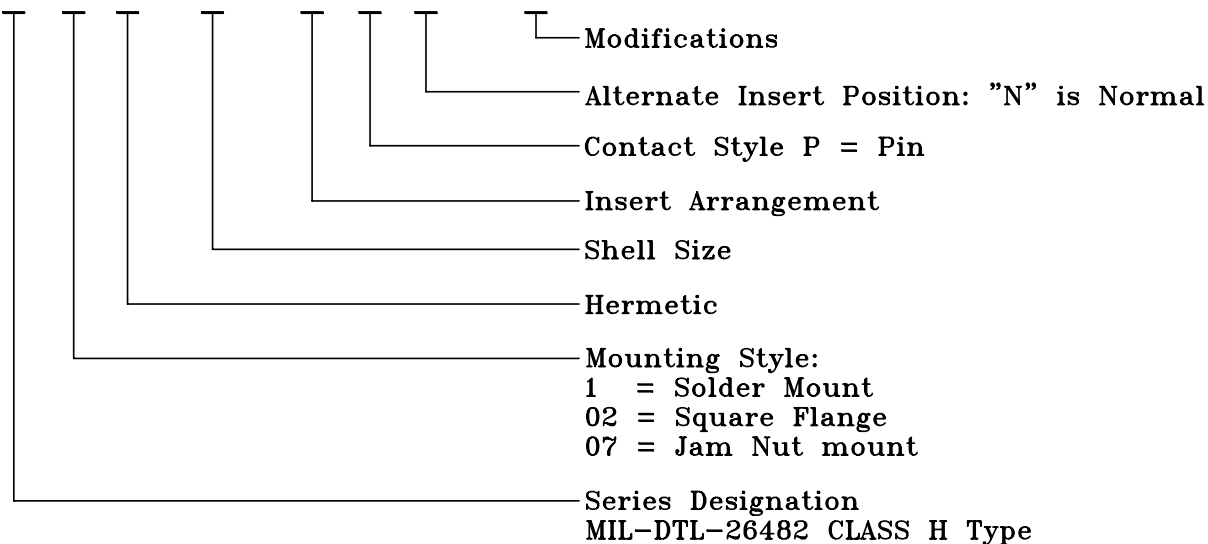
PAGE 1 OF 4 PAGES

(800) 882-6414 | sales@geminelec.com

MIL-DTL-26482 TYPE, DT SERIES  
(COMMERCIAL EQUAL - HERMETIC)

PART NUMBERING SYSTEM

DT 1 H - 22 - 55 P N - \*\*\*



GENERAL SPECIFICATIONS

MATERIAL

Shell, Bayonet and Flange: Carbon Steel  
Pins: 52 Nickel Alloy  
Seals: Silicone O-Ring only  
Insulator: Glass

CURRENT RATING

Size 20: 5 AMPS  
Size 16: 10 AMPS

AIR LEAKAGE

1x10<sup>-6</sup> CM<sup>3</sup>/SEC AT 15psi

INSULATION RESISTANCE

5,000 megohms AT 500VDC

OPERATING TEMPERATURE

-67°F TO +257°F (-55°C TO +125°C)

STANDARD PIN IS SOLDER CUP TYPE. OTHER PIN TYPES ALSO AVAILABLE (EYELET, STRAIGHT, THERMOCOUPLE) - CONSULT FACTORY.

STANDARD FINISH IS TIN PLATED SHELL AND PINS. OTHER FINISHES ALSO AVAILABLE (GOLD, NICKEL, OLIVE DRAB, etc.) - CONSULT FACTORY.

SPECIALS CAN BE SUPPLIED TO MEET CUSTOMER SPECIFICATIONS - CONSULT FACTORY.

OUR CONNECTORS MATE WITH ANY PLUG WITH SOCKET CONTACTS WHICH MEET THE DIMENSIONAL REQUIREMENTS OF MIL-DTL-26482 AND MS3116.

--- CLICK HERE ---